



### Area 4: Land North of Mount Road

This area includes the Council Offices, The Castle Mound, Memorial Gardens, the Health Centre and District Hospital.

The boundaries of the area are Mount Road, Argent's Mead and Hill Street.

The Masterplan identifies how the site could be redeveloped if a suitable site can be found to relocate the Council Offices. A mix of uses are proposed including residential accommodation overlooking Mount Road, the provision of a new leisure centre and an enlarged and improved Argent's Mead.

Hinckley and Bosworth Borough Council will be undertaking a detailed feasibility study for the provision of leisure facilities which will consider a number of sites including this site.

#### Issues

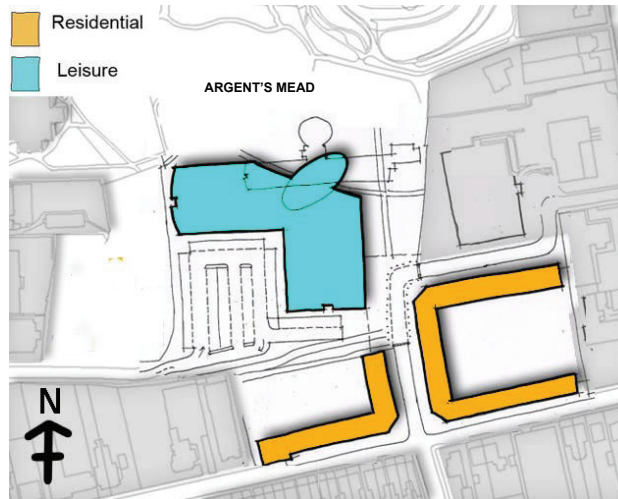
- Finding a suitable site to relocate the Council Offices.
- Enhancing Argents Mead, the Castle Mound and War Memorial.
- Retention of Health Centre.
- Protection of mature trees in Argent's Mead.
- Historic Setting of St Mary's Church.

#### Aims

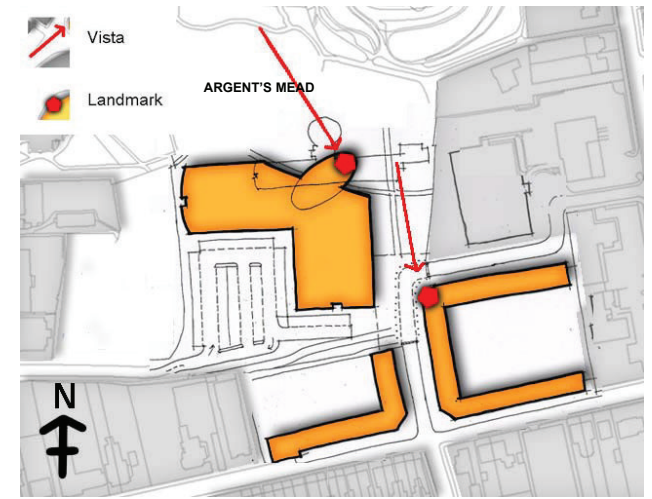
- To provide a new leisure centre.
- To improve ease of movement for pedestrians from Argents Mead to Castle Street.
- To provide good visual surveillance of Argent's Mead.
- Ensuring new leisure centre does not encroach upon Argents Mead past the existing Council Offices.

#### Potential Uses & Outputs

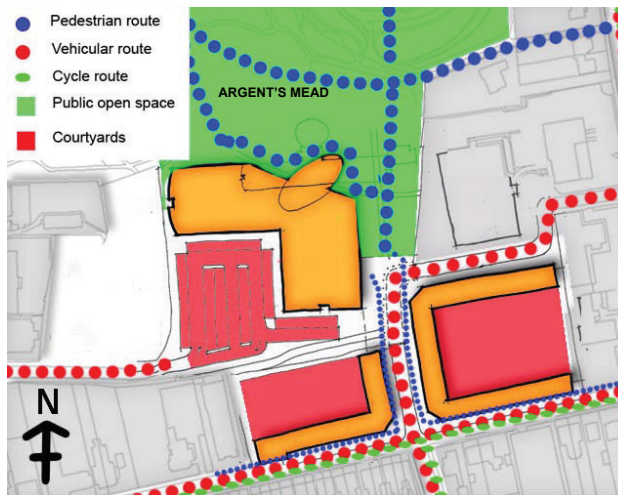
- Residential: 90 units (75m<sup>2</sup>)
- Leisure: 5000m<sup>2</sup>



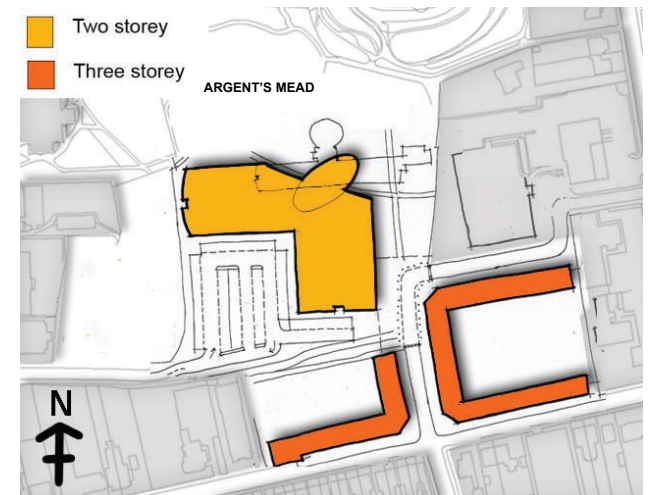
Land Use



Landmarks and Vistas



Movement Network



Storey Heights